



User's Guide

Version 1.2.1

Copyright © 2007 MGH

Table of Contents

<i>About this Guide</i>	<i>iii</i>
<i>Prerequisites</i>	<i>1</i>
Downloads	1
<i>Install</i>	<i>2</i>
Installing the i2b2 Workbench application	2
<i>Execute</i>	<i>3</i>
Running the i2b2 Workbench application	3
<i>License</i>	<i>6</i>

About this Guide

Informatics for Integrating Biology and the Bedside (i2b2) is one of the sponsored initiatives of the NIH Roadmap National Centers for Biomedical Computing (<http://www.bisti.nih.gov/nbc/>). One of the goals of i2b2 is to provide clinical investigators broadly with the software tools necessary to collect and manage project-related clinical research data in the genomics age as a cohesive entity—a software suite to construct and manage the modern clinical research chart. This guide with the provided source code will help you to learn about the developing and understand the requirements for creating i2b2 cells.

1

Prerequisites

Downloads

a. Java JDK

Make sure that you have Java 1.5 version 11 or higher installed. If you need to get and install the 1.5 JDK, go to

http://java.sun.com/javase/downloads/index_jdk5.jsp

Run the installer.

2

Install

Installing the i2b2 Workbench application

Download and extract the i2b2Workbench Demo executable from <https://www.i2b2.org/software> (Click on "Download Now" next to i2b2 workbench label.) In the Demo tab, select either i2b2Workbench-win-121.zip or i2b2Workbench-mac-121.zip; download and extract into a target area such as C:\i2b2workbenchV1.2.1

In your target's i2b2workbench directory, edit the file "workbench.ini" so that the value of Xmx is equal to the amount of physical memory in your computer. The default setting is 480m. For example, if you are running with 1GB of RAM:

```
-Xmx=1024m
```

Launch C:\i2b2workbenchV1.2.1\i2b2workbench\i2b2workbench.exe

Logs are written to C:\i2b2workbenchV1.2.1\i2b2workbench\i2b2.log and can also be viewed by clicking on the Status icon.

3

Execute

Running the i2b2 Workbench application

Double click on the i2b2workbench icon.

You will see a splash screen followed by a Login dialog box. Log in; the User name is **demo** and the Password is **demouser**.

Login to i2b2

Enter UserID and Password

Target location: Harvard Demo

User name: demo

Password: *****

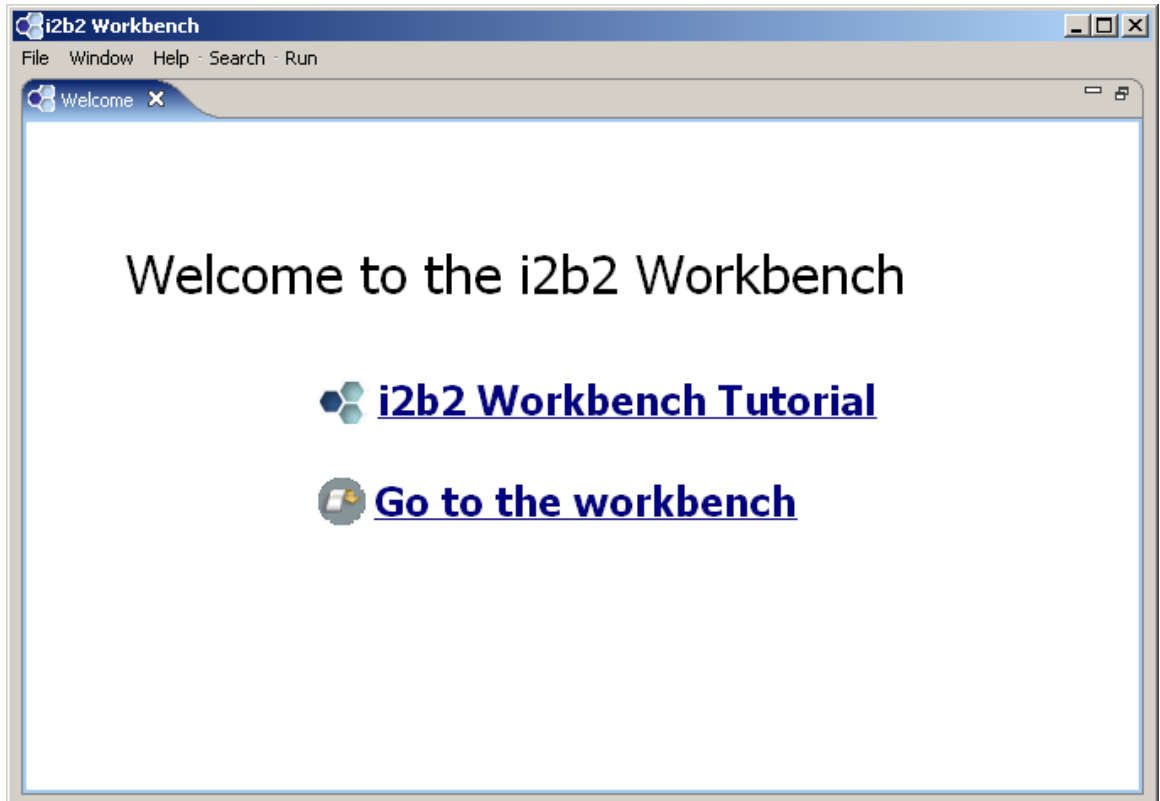
Start as demonstration only ?

Login Cancel

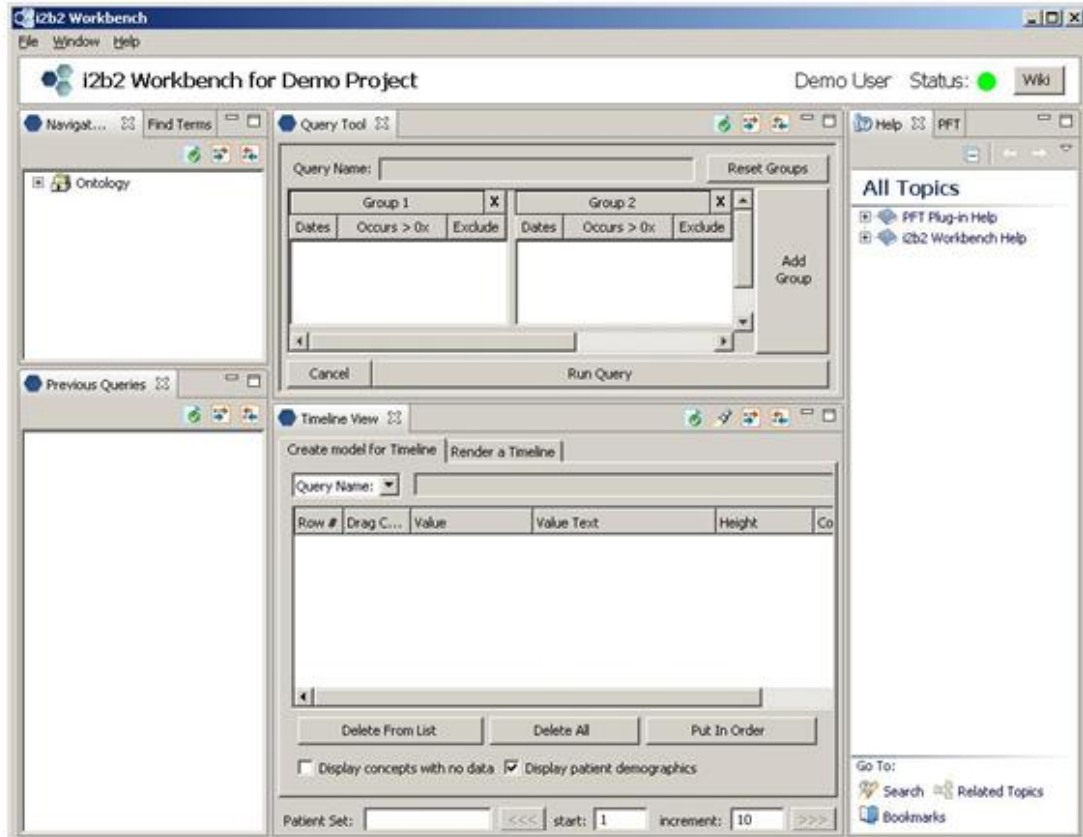
http://webservices.i2b2.org/PM/rest/PMService/

Select 'Go to the workbench'

If at any time you wish to return to the welcome page select Help->Welcome from the menu bar.



If the default layout needs to be reconfigured, select Window->Show View and the view(s) you wish to add to the layout. Move the position of any view by clicking on the view tab and dragging to another position.



4

License

The i2b2 source code is licensed under the i2b2 Software License Software. This includes but not limited to all code in the `edu.harvard.mgh.i2b2.*` package namespace.